



KB SYSTEMS BROCHURE

• AGRICULTURE • IRRIGATION • INDUSTRIAL • DOMESTIC



SOLARPUMPS.COM
866.519.7892

PREMIUM QUALITY & CUSTOMER SATISFACTION

Since 1988, Advanced Power Inc. has been one of the leading manufacturers in the solar pump industry with great pricing and providing experienced quality customer service with every purchase. API focuses our efforts on quality solar pump manufacturing, however we also provide complete solar systems for endless markets like agriculture, small or large irrigation, domestic or rural homes, oil and industrial applications.

Our team of system specialists are trained to properly size each solar system to meet your application needs. With over 130 years of combined experience in the solar pumping industry you can rely on us to accurately calculate which system is best for your needs.

We incorporate sophisticated data and software programs along with precision CNC machining in house, allowing API/Elevate to control all aspects of the parts manufactured and the assembly process. The result of this type of commitment and control allows us to hold high manufacturing standards and quality parts. Using this concept along with quality service has rewarded API with thousands of customers worldwide.

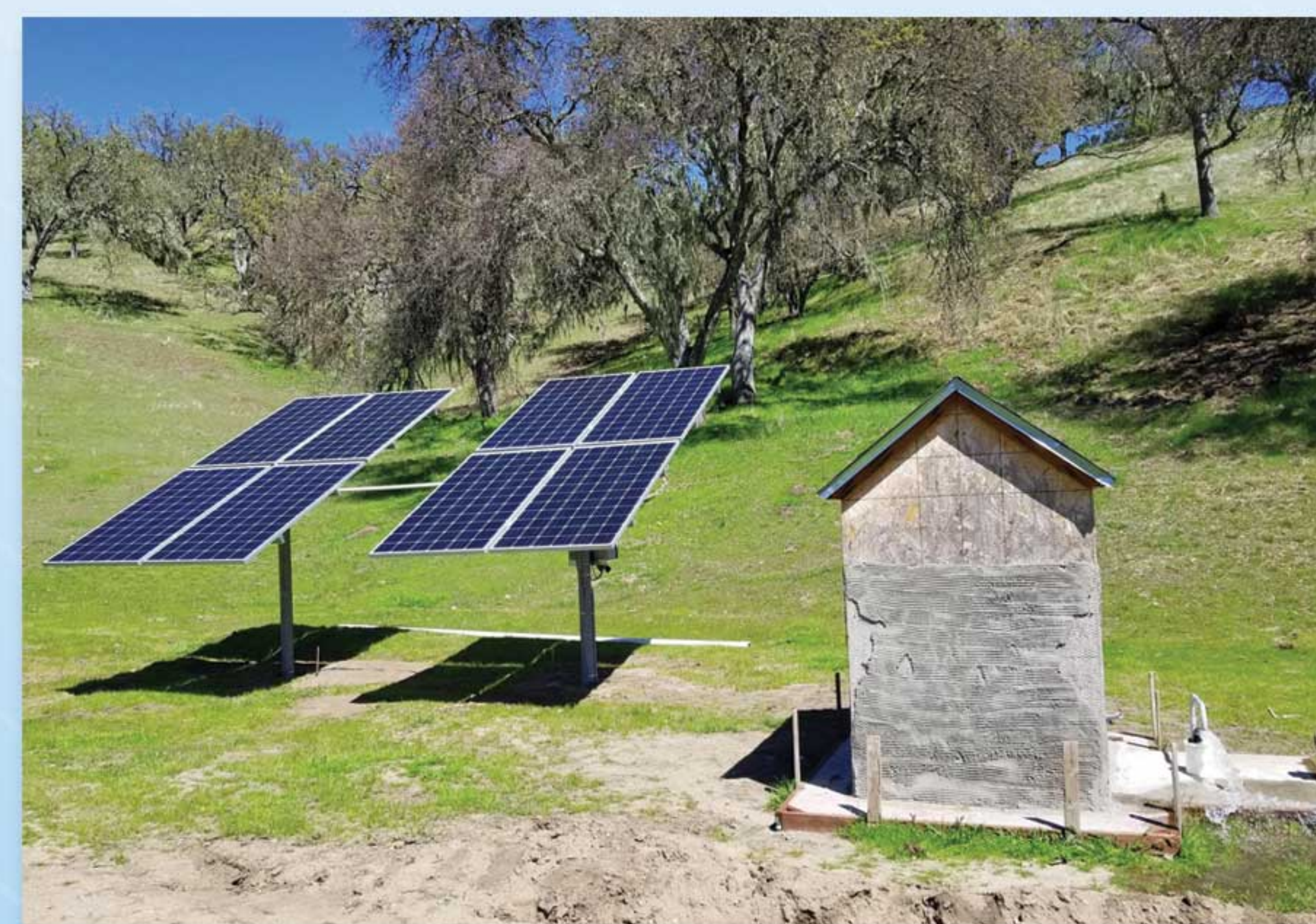


PRODUCTION STARTS & ENDS IN OUR SHOP, FROM RAW MATERIALS TO SHIPPING.

Engineered, manufactured, tested and serviced all in our facility in Weatherford, OK. We ensure you are getting only the best when purchasing a product from us. As a manufacturer we feel responsible to only provide the best product line on the market, to the end user. Each process in our facility gives us complete control over providing a quality tested, functioning product. By not sourcing out our processes, this gives us control over the efficiency and quality of work.



Our systems incorporate features like automatic controls, pre-wired plug together components, durable, aircraft grade aluminum mounts, adds simplicity and durability to make your installation process simple and quick. Reliable, long term product and quality service has been our commitment for over 30 years.



MADE FOR VERSITILITY

The benefits of choosing our KB Systems is the adaptability we can provide for each application.

Whether you need water for seasonal or year-round, we have provided water for over 30 years, for countless types of applications. Our KB Systems are professionally programmed by our engineers to fit your application needs.

KB Systems come with quality manufactured solar panel(s), easy to use male-to-female connectors, durable mounting, pre-wired, submersible water pump, fasteners, Solar Boss Drive and manuals.



SOURCING WATER FOR MULTIPLE APPLICATIONS:

- ✓ LIVESTOCK & WILDLIFE
- ✓ LARGE IRRIGATION
- ✓ INDUSTRIAL USE
- ✓ HOMES & CABINS
- ✓ PONDS
- ✓ & MUCH MORE!



HOW CAN WE HELP YOU?

- Premium Quality: We provide only the highest quality products on the market.
- Cost Efficient: Gain a return on your solar investment in future years to come.
- Functionality: Solar will function efficiently in extreme weather conditions.
- Versitility: Universal application allows you to use your systems for more than one operation.

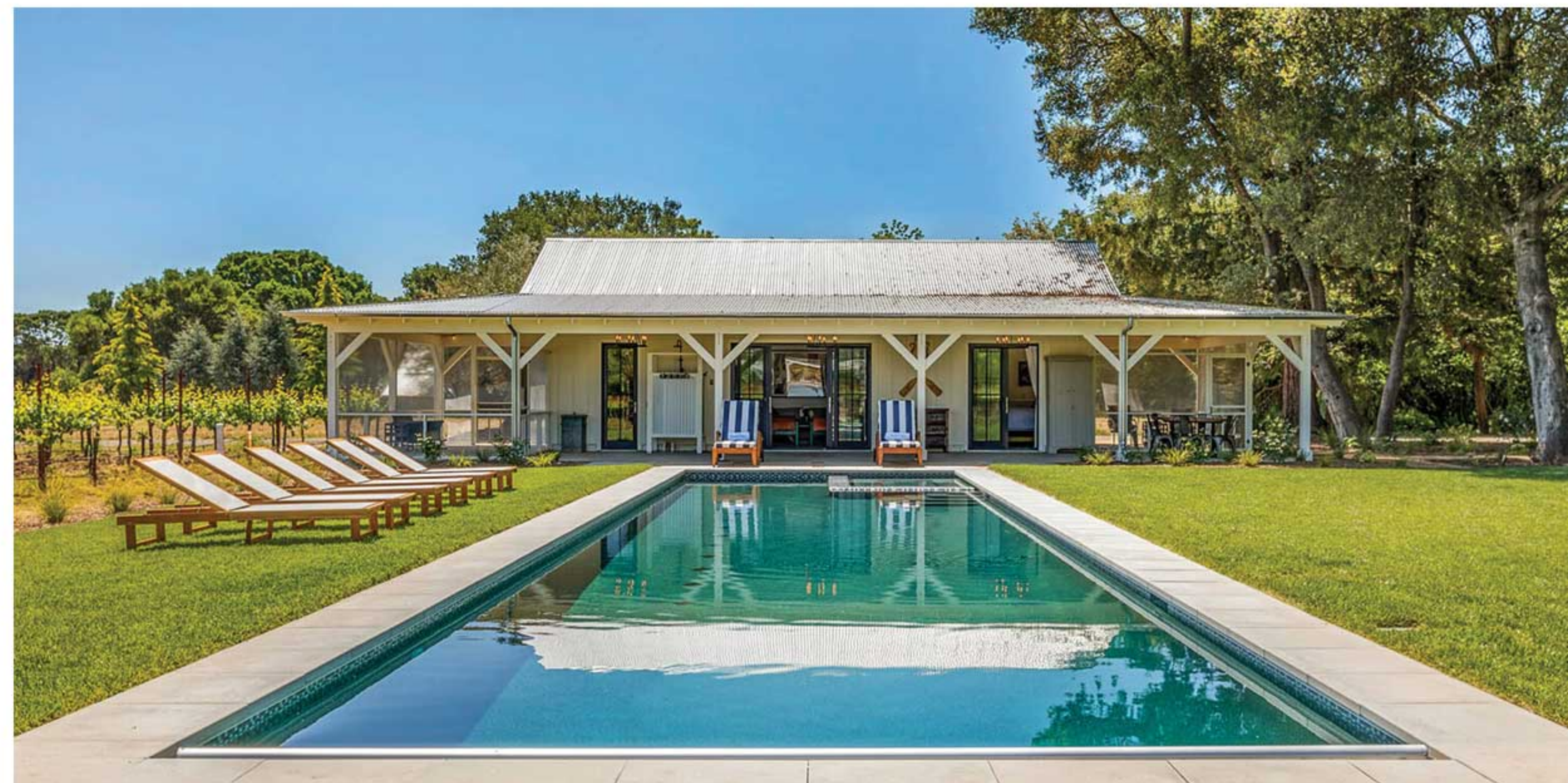
IRRIGATION MUNICIPAL DRIVE POWER FOR INDUSTRIAL AGRICULTURE DOMESTIC

PREMIUM SOLAR PUMPING

Pump water at higher capacity or deeper depths without compromising performance.
Experience reliability with our new KB Systems and Pumps.

KEY FEATURES:

- American Made
- Corrosion-resistant stainless steel exterior
- Pump up to 1200 GPM or pump up to depths of 800FT.



POWERED BY:



SINGLE PHASE & 3-PHASE MOTORS

We have the capabilities to power single-phase or 3-PH pumps with our Solar Boss Drive. These submersible pumps feature proven components, able to withstand the harshest environments and provide superior performance for irrigation, community water systems, water transfer systems, recirculation and factories.



POWER UP TO 400HP

STATE OF THE ART DRIVE SYSTEMS

Nothing on the market can compare to API's new drive!

Our Solar Boss Drive is an inverter that drives 3-Phase AC motors from DC direct solar power or 220-240VAC Single Phase.

- Overcurrent or overtorque motor protection
- Real time read-out of frequency, BUS voltage, amperage, and watts.
- Automatic restart
- On/Off Power Switch for easy control
- Double lightening arrestors for lightening surge protection.
- Automatic switch from AC utility/generator to Solar DC power.

The Solar Boss Drive gives customers a solution for remote motor/pump operation needs.



PREMIUM SOLAR

WHY SOLAR?

- Save money with no external utilities.
- No running maintenance or over head cost on maintaining.
- Autonomous Drive
1 year warranty on controls
- Runs directly off solar power, but has the ability to be grid-tie to utility or generator backup.
- 25 year power output warranty on premium quality solar arrays. Hail stone rating of 1" hail at 80 MPH
- Free USA Technical support

Cost Efficient, Energy Saving Solar

We extensively research solar manufacturers we source from, to provide you with the top of the line quality solar and make sure they back it with an extensive warranty.

We take the grunt work out for you!

Extremely Durable Mounting

Easy Male to Female Plugs and Wiring

At API, our wiring is made customer friendly. With simple plug & play connectors and our detailed wiring illustrations, we work to make your install as easy as possible.

Wind Brace for Added Support

State of the Art Motor Drive

Drive any AC 3-Phase motor with our Solar Boss Drive. That means any motor can be powered by solar now!

The only drive on the market that can efficiently use and switch between AC or DC power.

KB SYSTEMS



Our KB01-04 systems are equipped to pump water for multiple applications; small irrigation, ponds, livestock, residential, and light industrial pumping.

View Flow Charts for each systems starting on Pg 10



System PN	Estimated GPD	Max Flow Rate (GPM)	Min Flow at Max Depth (GPM)	Max Depth (FT)	Panel Power	Pump HP	Minimum Casing ID
KB01	3,066	7.3	2	360	60 Cell	0.5	4IN
KB02	3,780	9	2.2	280	60 Cell	0.5	4IN
KB03	6,300	15	5.5	250	60 Cell	0.5	4IN
KB04	9,240	22	6	150	60 Cell	0.5	4IN



- KB SYSTEMS INCLUDE:**
- (4) 60-Cell solar modules
 - Extremely durable steel & aluminum mounts.
 - High Capacity 0.5 HP stainless steel submersible pump comes with 100' of attached wire.
 - Solar Boss Drive DC input of 300VDC; Output 200VAC 3-Phase
 - Panel Wire-Harnesses for easy plug & play
 - High-voltage power switch
 - Professionally programmed by one of API's engineers.

Requirements:
These systems require a 4 1/2" OD pole for mounting.

INDUSTRIAL STRENGTH



Ground Mounting Displayed

Our KB05-11 systems are equipped to pump water for multiple applications; irrigation, ponds, large livestock herds, residential, and industrial pumping.

These systems give you a variety of water demands to choose from, up to 21,000 gallons per day or pump as deep as 600 FT to water!



View Flow Charts for each systems starting on Pg 10

System PN	Estimated GPD	Max Flow Rate (GPM)	Min Flow at Max Depth (GPM)	Max Depth (FT)	Panel Power	Pump HP	Minimum Casing ID
KB05	3,412	7.5	2	600	60 Cell	1.0	4IN
KB06	4,200	10	2	500	60 Cell	1.0	4IN
KB07	6,720	16	3	450	60 Cell	1.0	4IN
KB08	6,720	20	4	300	60 Cell	1.0	4IN
KB09	11,340	27	5	240	60 Cell	1.0	4IN
KB10	13,860	33	8	200	60 Cell	1.0	4IN
KB11	21,000	50	10	160	60 Cell	1.0	4IN



- KB SYSTEMS INCLUDE:**
- (8) 60-Cell solar modules
 - Iron Ridge ground mount system.
Durable, adjustable aluminum mounts.
Top of Pole Mounting is available upon request.
 - High Capacity 1.0 HP stainless steel submersible pump comes with 100' of attached wire.
 - Solar Boss Drive DC input of 380VDC; Output 200VAC 3-Phase
 - Panel Wire-Harnesses for easy plug & play
 - High-voltage power switch
 - Professionally programmed by one of API's engineers.

Requirements:
These systems require 2" SCH 40 pipe for mounting.

HIGH CAPACITY SYSTEMS

Our KB12-KB20 systems are equipped to pump water for large demand applications; large irrigation, frac ponds, commercial uses, or industrial pumping.

These systems give you a variety of water demands to choose from, up to 33,600 gallons per day or pump as deep as 780 FT to water!



Top of pole mounting shown above.

View Flow Charts for each systems starting on Pg 10

System PN	Estimated GPD	Max Flow Rate (GPM)	Min Flow at Max Depth (GPM)	Max Depth (FT)	Panel Power	Pump HP	Minimum Casing ID
KB12	3,150	7.5	2	780	72 Cell	1.5	4IN
KB13	4,200	10	2	650	72 Cell	1.5	4IN
KB14	6,720	16	3	525	72 Cell	1.5	4IN
KB15	8,400	20	4	350	72 Cell	1.5	4IN
KB16	11,760	28	6	325	72 Cell	1.5	4IN
KB17	13,860	33	8	325	72 Cell	1.5	4IN
KB18	21,000	50	10	220	72 Cell	1.5	4IN
KB19	27,300	65	20	150	72 Cell	1.5	4IN
KB20	33,600	80	30	120	72 Cell	1.5	4IN



KB SYSTEMS INCLUDE:

- (8) 72-Cell solar modules
- Iron Ridge ground mount system.
Durable, adjustable aluminum mounts.
Top of Pole Mounting is available upon request.
- High Capacity 1.5 HP stainless steel submersible pump comes with 100' of attached wire.
- Solar Boss Drive DC input of 380VDC; Output 200VAC 3-Phase
- Panel Wire-Harnesses for easy plug & play
- High-voltage power switch
- Professionally programmed by one of API's engineers.

Requirements:

These systems require 2" SCH 40 pipe for mounting.

DEEP WELL SYSTEMS

Our KB21-KB32 systems are equipped to pump water for large demand applications; large irrigation, frac ponds, commercial uses, or industrial pumping. These systems give you a variety of water demands to choose from, up to 50,400 gallons per day or pump as deep as 800 FT to water!

System PN	Estimated GPD	Max Flow Rate (GPM)	Min Flow at Max Depth (GPM)	Max Depth (FT)	Panel Power	Pump HP	Minimum Casing ID
KB21	3,412	7.5	4.4	800	72 Cell	2.0	4IN
KB22	4,200	10	5	800	72 Cell	2.0	4IN
KB23	6,720	16	3	630	72 Cell	2.0	4IN
KB24	12,140	20	4	520	72 Cell	2.0	4IN
KB25	11,760	28	6	420	72 Cell	2.0	4IN
KB26	13,860	33	8	330	72 Cell	2.0	4IN
KB27	21,000	50	10	280	72 Cell	2.0	4IN
KB28	27,300	65	20	200	72 Cell	2.0	4IN
KB29	33,600	80	30	140	72 Cell	2.0	4IN



KB21-KB29 SYSTEMS INCLUDE:

- (8) 72-Cell solar modules
- High Capacity 2.0 HP stainless steel submersible pump comes with 100' of attached wire.

View Flow Charts for each systems starting on Pg 10

ALL SYSTEMS INCLUDE:

- Iron Ridge ground mount system.
Durable, adjustable aluminum mounts.
Top of Pole Mounting is available upon request.
- Solar Boss Drive DC input of 380VDC; Output 200VAC 3-Phase
- Panel Wire-Harnesses for easy plug & play
- High-voltage power switch
- Professionally programmed by one of API's engineers.

System PN	Estimated GPD	Max Flow Rate (GPM)	Min Flow at Max Depth (GPM)	Max Depth (FT)	Panel Power	Pump HP	Minimum Casing ID
KB30	33,600	120	40	150	72 Cell	3.0	4IN
KB31	50,400	120	40	150	72 Cell	3.0	4IN
KB32 *	40,320	96	40	150	72 Cell	3.0	4IN

Requirements:

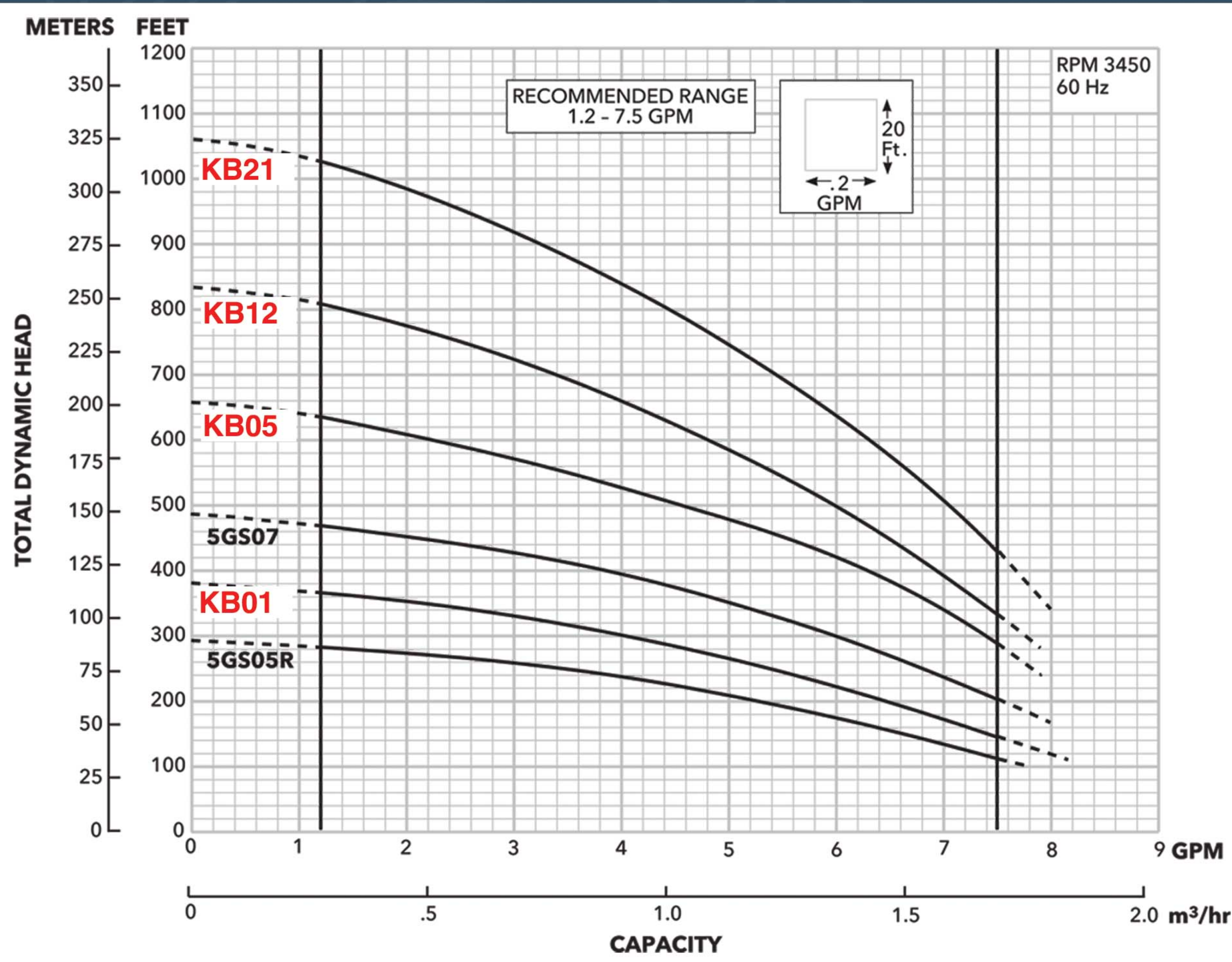
These systems require 2" SCH 40 pipe for mounting.

*KB32 requires a 6" or larger well casing.

KB30-KB32 SYSTEMS INCLUDE:

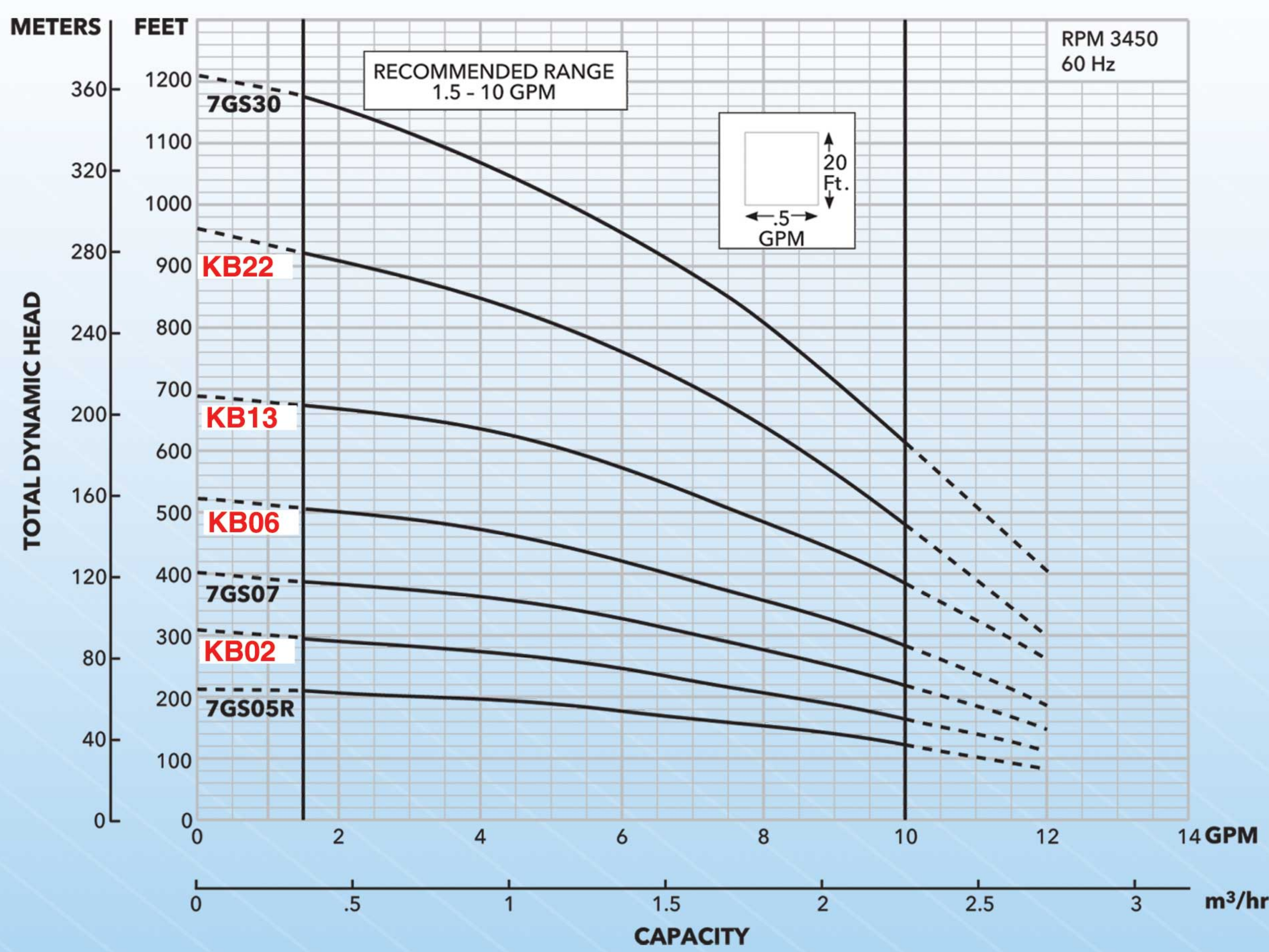
- (16) 72-Cell solar modules
- High Capacity 3.0 HP stainless steel submersible pump comes with 100' of attached wire.

Pump
Model
5GS

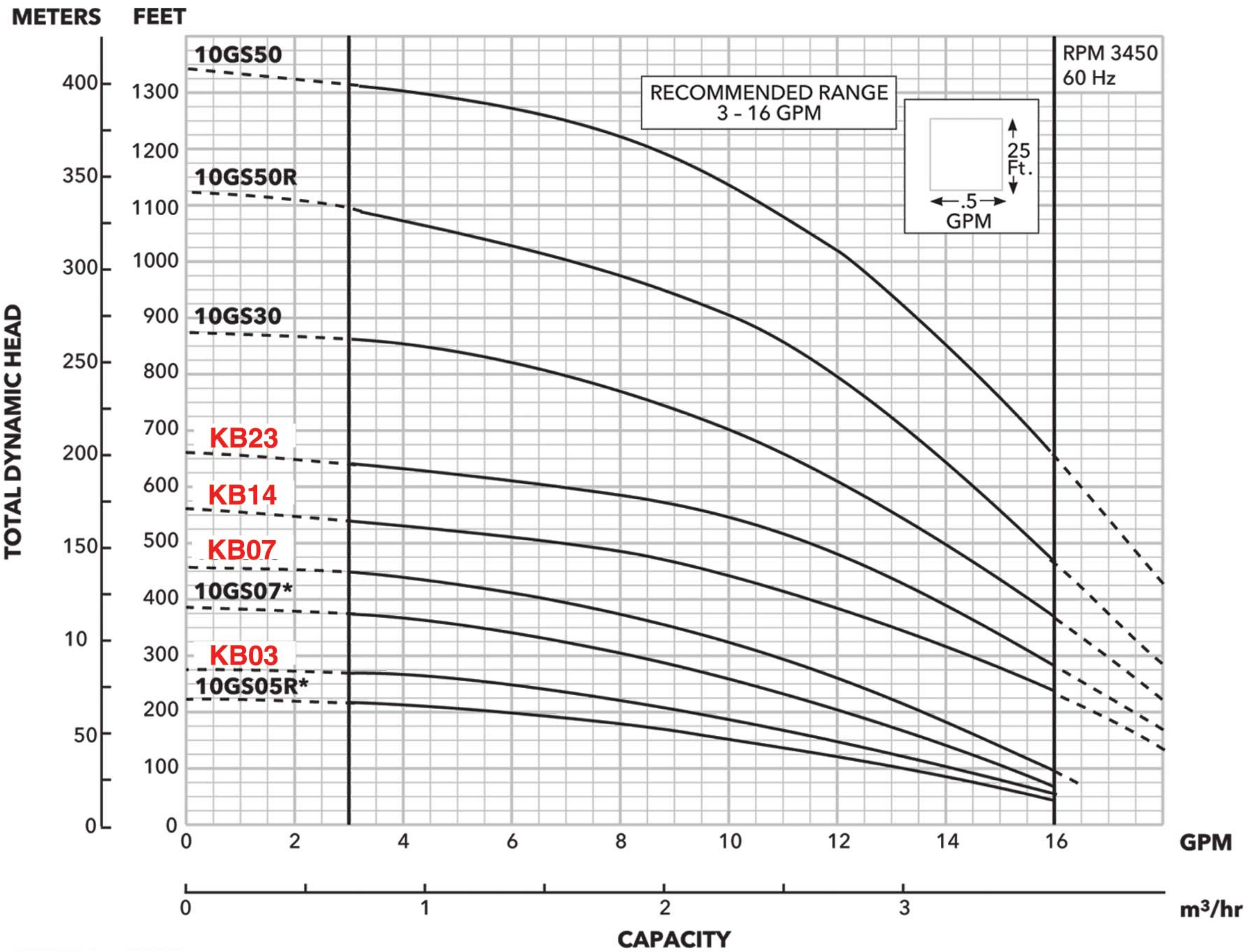


CUSTOMIZE OUR SYSTEMS TO POWER UP TO 400HP!

Pump
Model
7GS

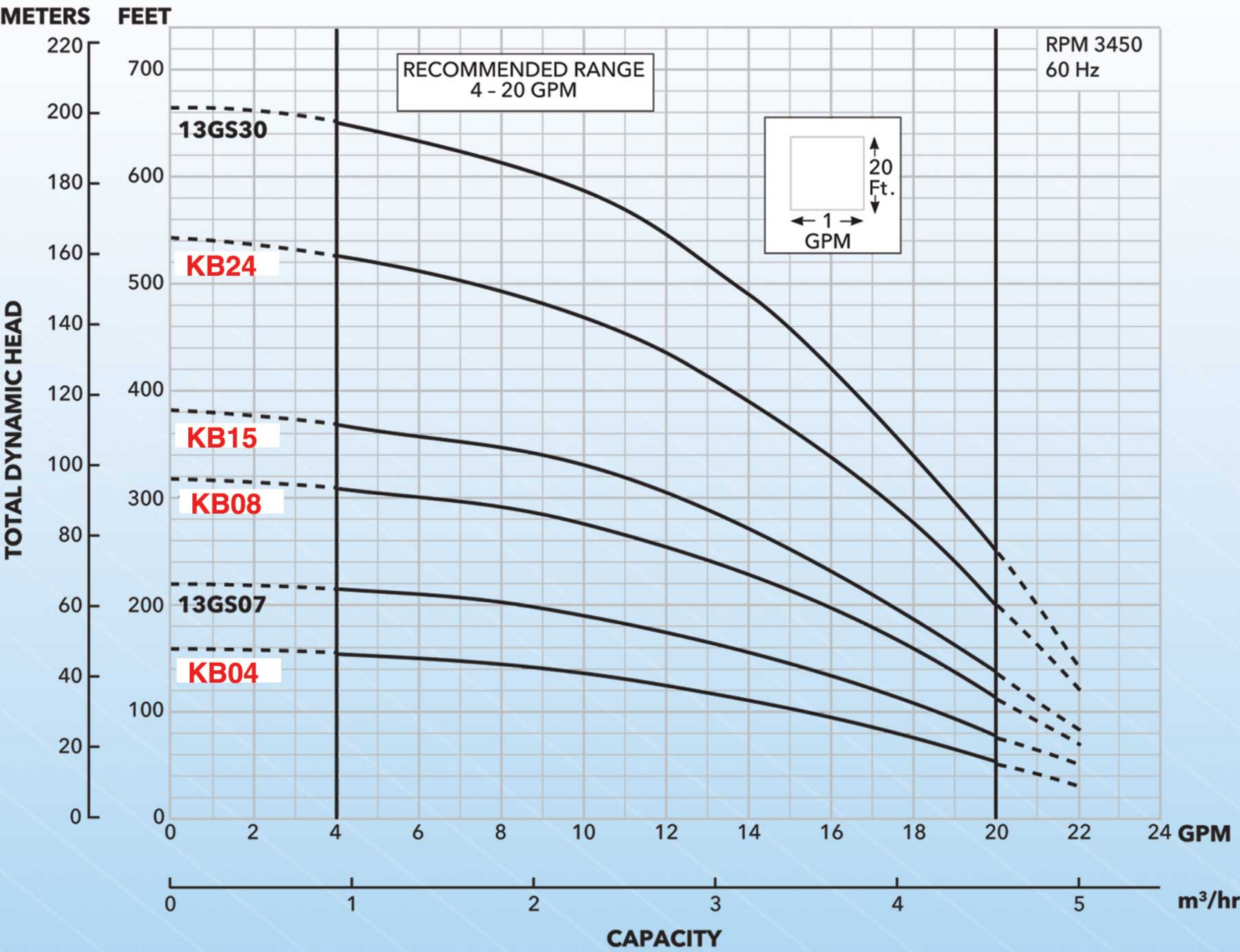


Pump
Model
10GS

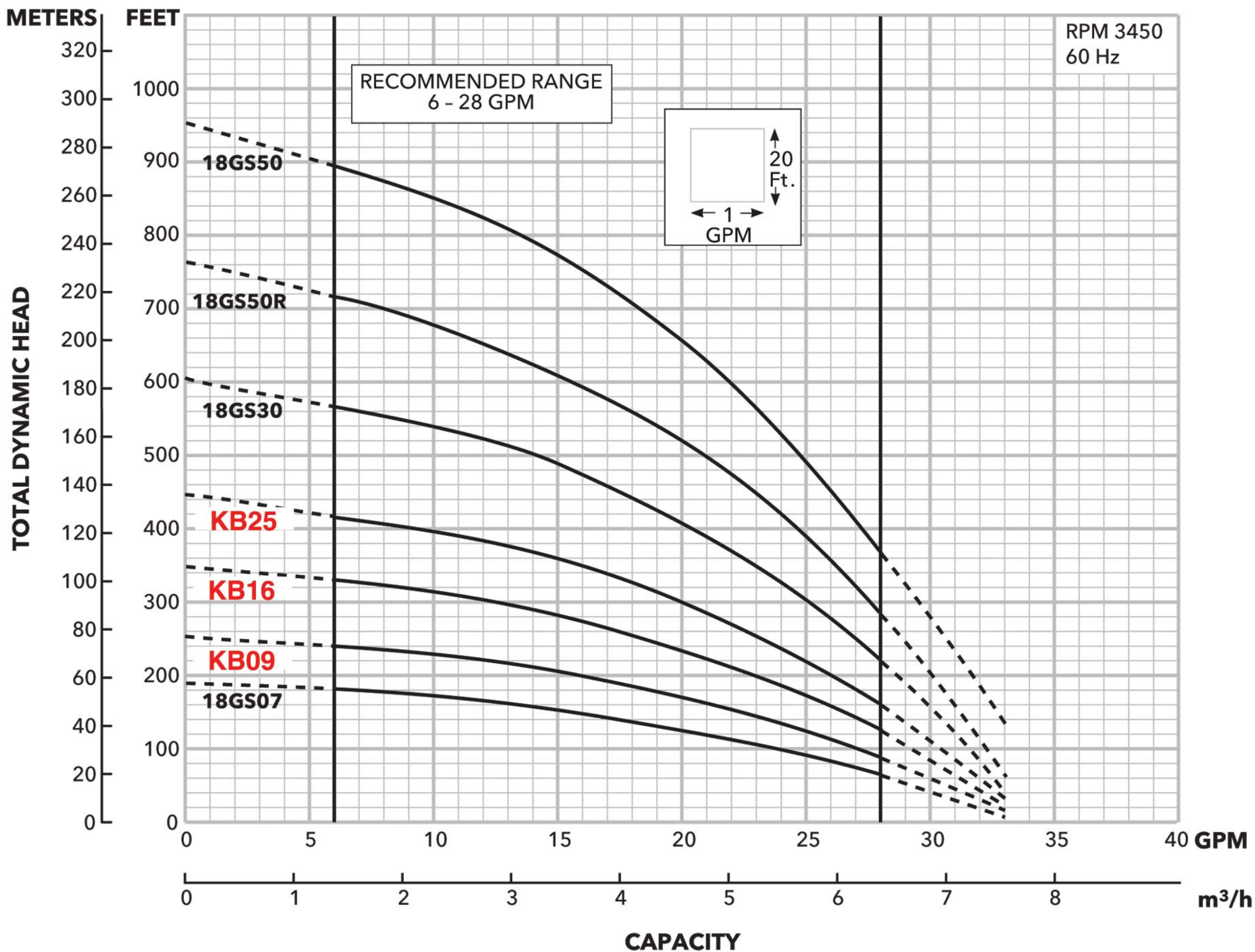


CUSTOMIZE OUR SYSTEMS TO POWER UP TO 400HP!

Pump
Model
13GS

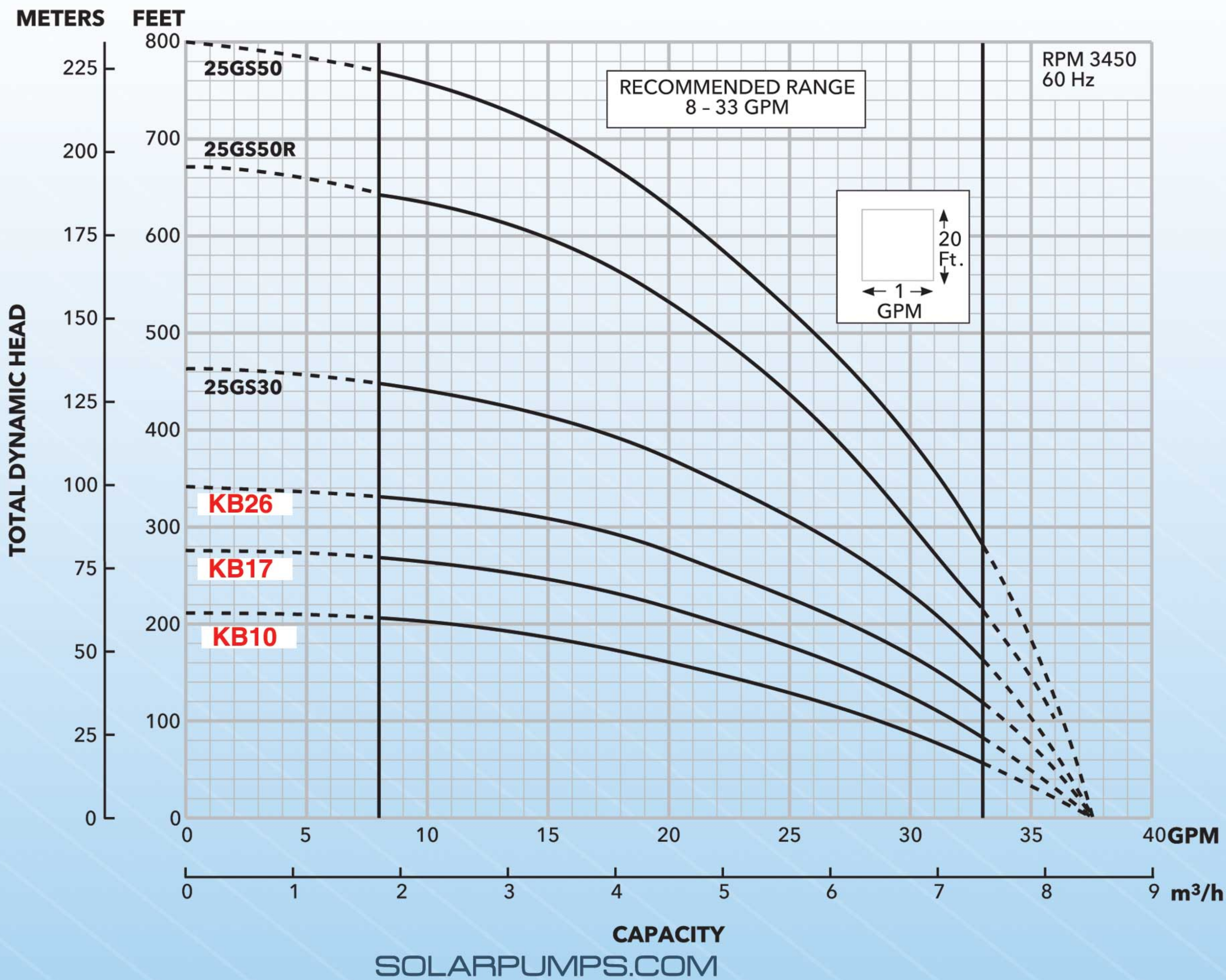


Pump
Model
18GS

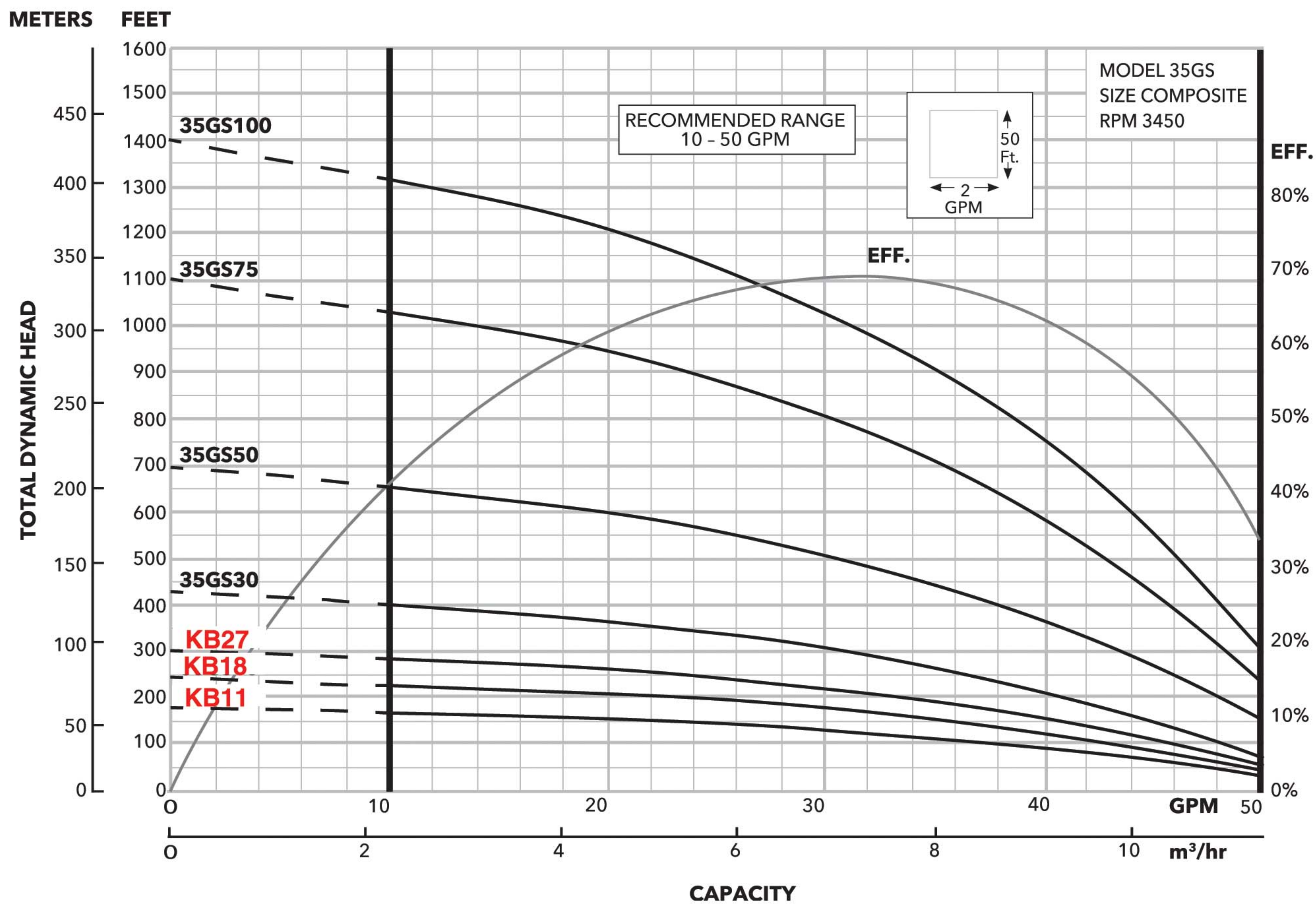


CUSTOMIZE OUR SYSTEMS TO POWER UP TO 400HP!

Pump
Model
25GS

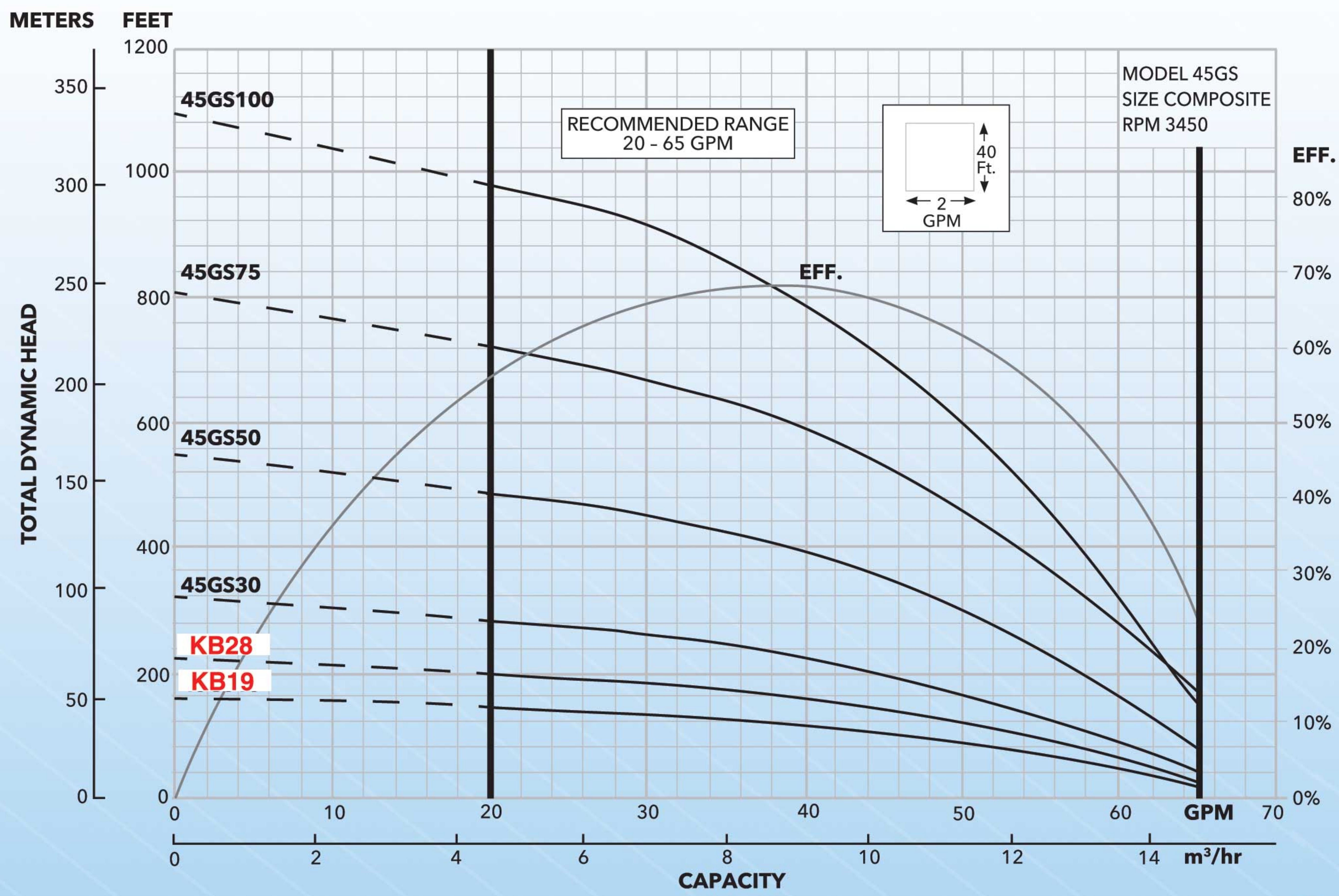


Pump
Model
35GS

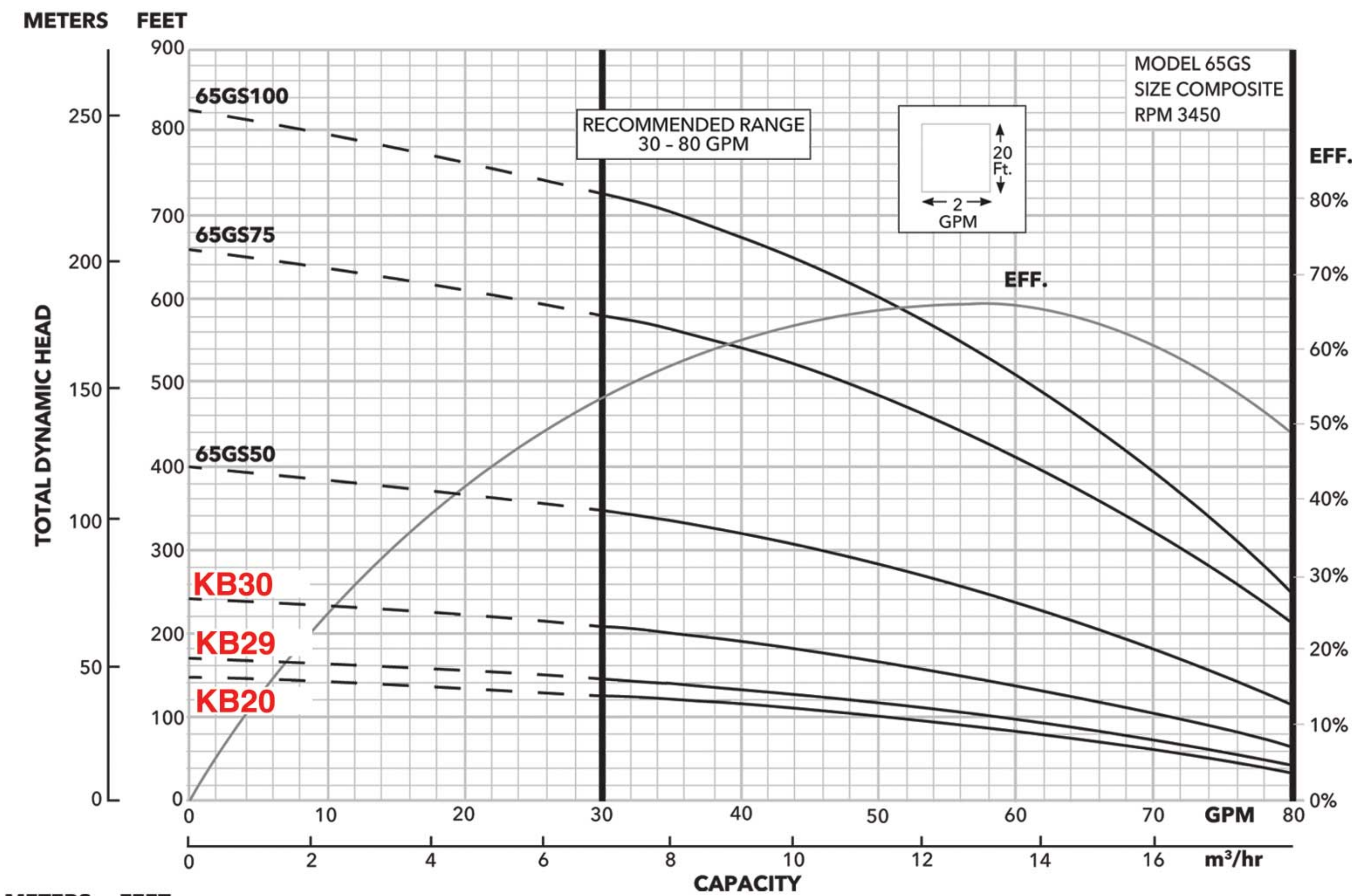


CUSTOMIZE OUR SYSTEMS TO POWER UP TO 400HP!

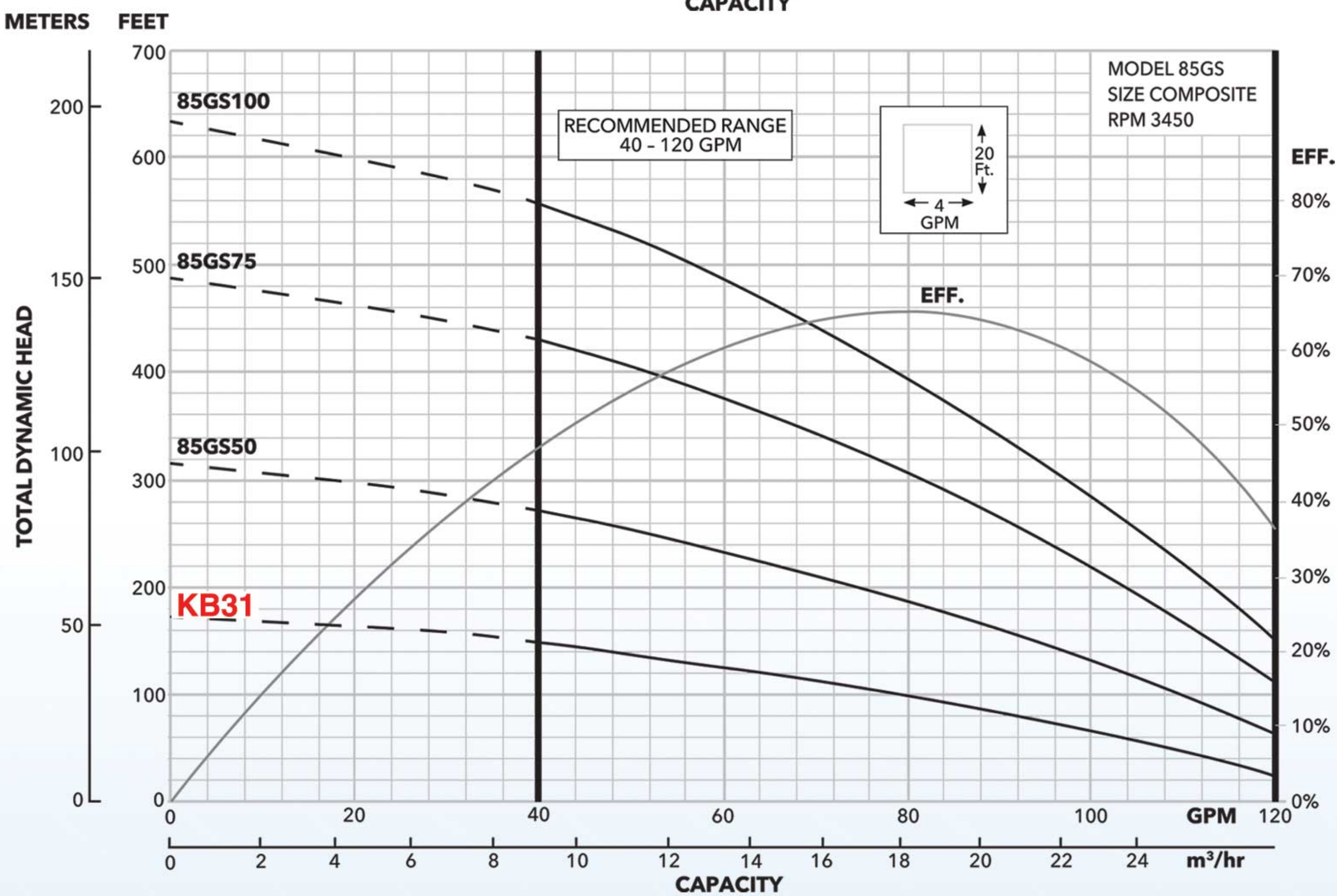
Pump
Model
45GS



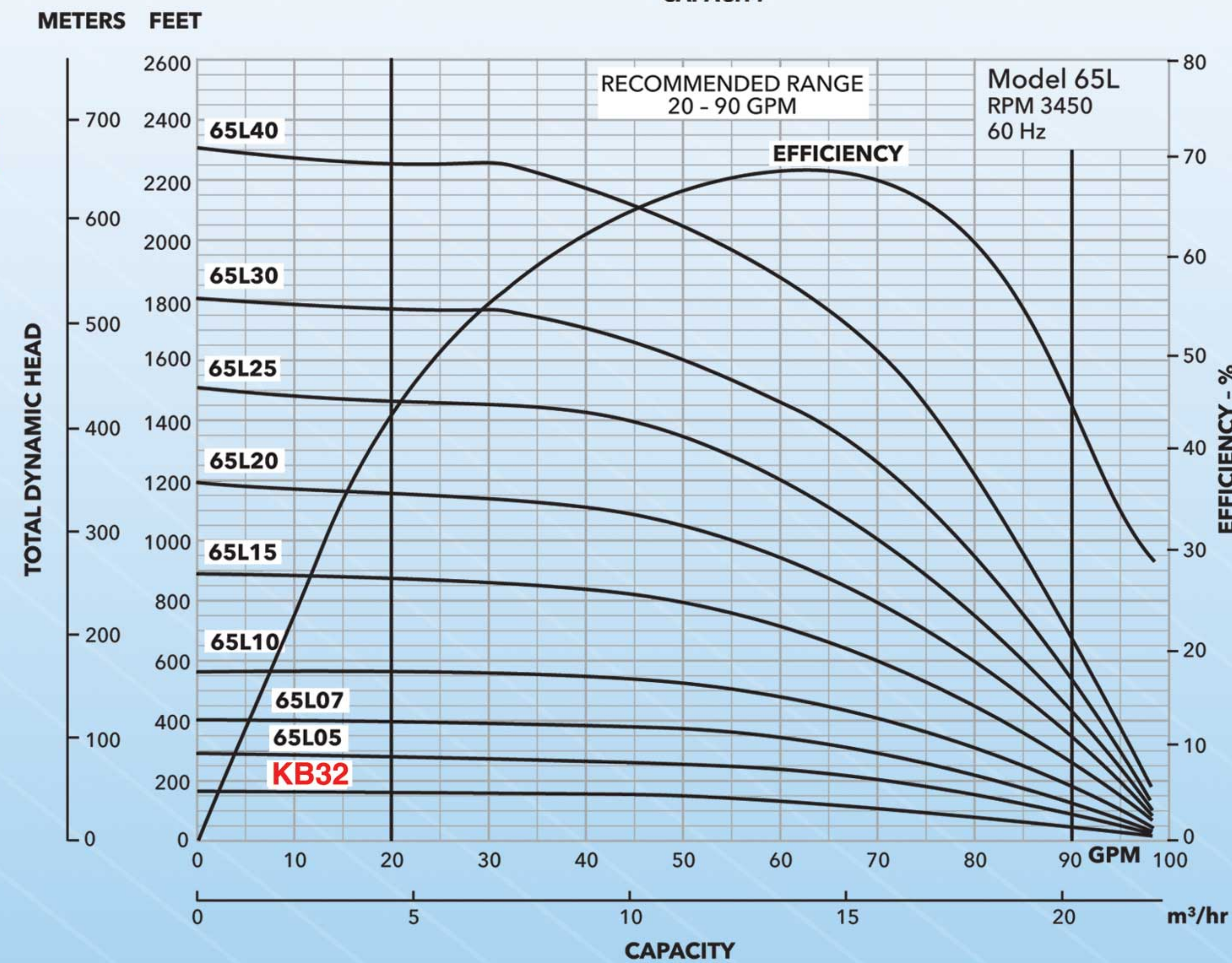
Pump Model 65GS



Pump Model 85GS



Pump Model 65L





ADVANCED POWER®

“It’s Watt We Do!”

SOLARPUMPS.COM
866.519.7892



**ONLINE SHOPPING
NOW AVAILABLE!**

CONTACT US

Customer Service:

(Toll Free) 1-866-519-7892
1-580-774-2220

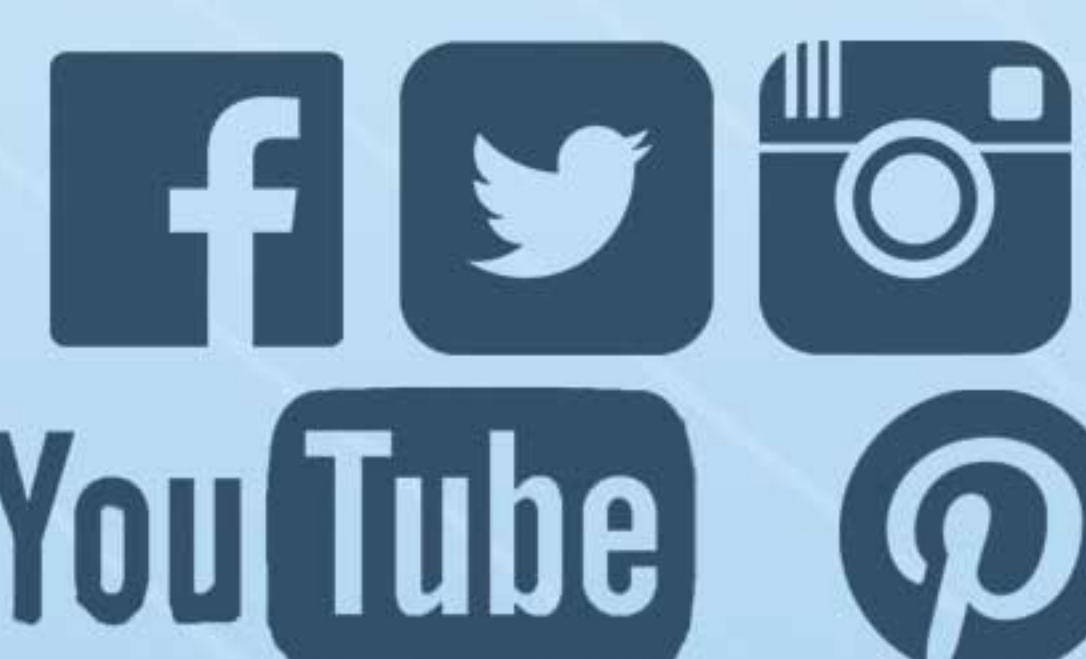
Billing Address:

P.O. Box 1937
Weatherford, OK 73096

Service & Returns Address:

1520 E. Eagle Rd.
Weatherford, OK 73096

FOLLOW US!
@advancedpowerinc





SOLARPUMPS.COM

866.519.7892